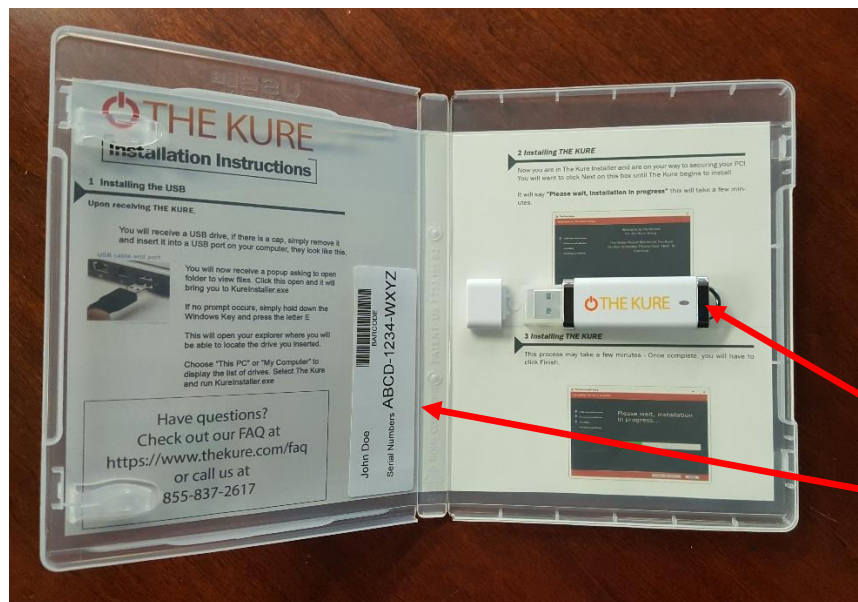


PLEASE READ THIS

The KURE Installation Instructions

Now that you have received The KURE, let's get you installed and configured. When you open your case, you will find a USB drive that will be used to install the software on your computer. You will also find a label with your serial number. **KEEP THIS FOR YOUR RECORDS.**



USB with The Kure software
Serial Number

Remove the USB drive from the case and insert it into your computer.



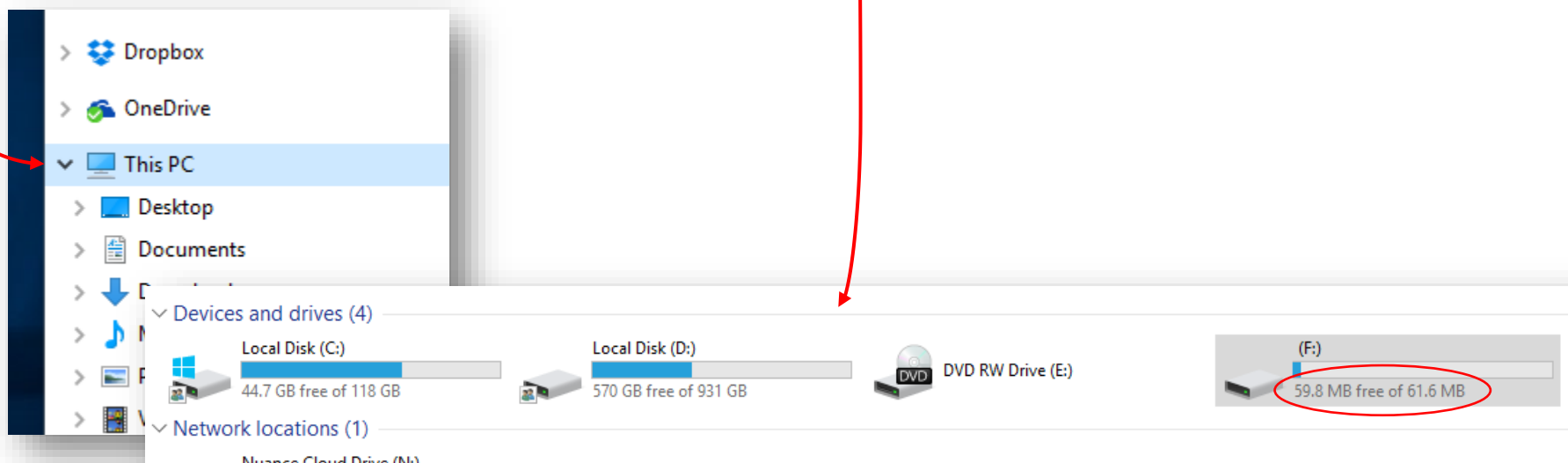
Turn page for more...

The drive will only go in one way, so you may have to turn it around. Once inserted properly, a red light in it will blink several times and then go solid.

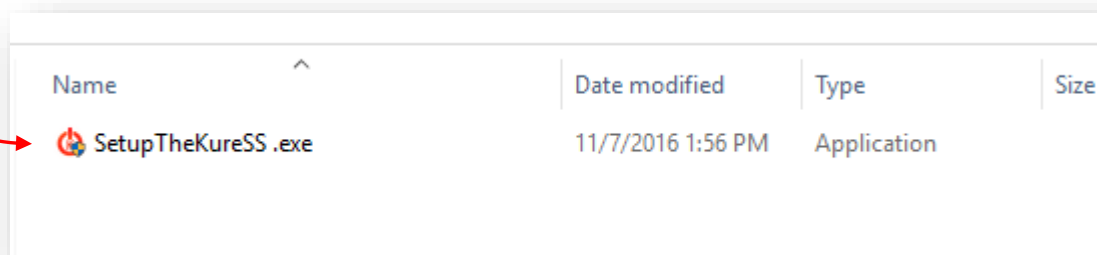
Next, open File Explorer by pressing The Windows key and E simultaneously and select This PC from the column on the left. On some versions of windows, it may say My Computer.



When selected, the right panel will show your drives as shown below. One of these will be the USB drive and you can tell which it is by the size of approximately 64MB.



When you double click this drive, you should see the installation program for The Kure. Right click and select open on SetupTheKureSS.exe and the installation will launch.



Turn page for more...